

SAFETY ENCLOSURES

High voltage tests solutions by EATON

CA0x enclosures advantages :

Available in 3 sizes adapted to your equipment

Working voltage 15 kVAC

Universal models to be used with any high voltage equipment

Fitted models for SEFELEC testers devices

Open door safety : test stops automatically when the door is opened by operator

Mechanical door lock while high voltage is ON.

Red/Green safety lamp to visualize high voltage danger

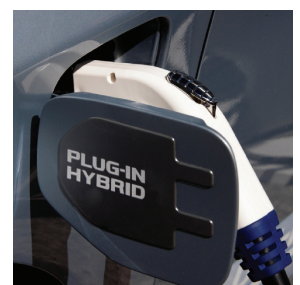
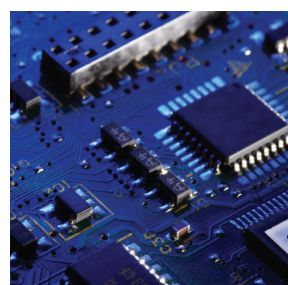
Double safety loop for production line integration

Compliance to IEC 50191, specific safety standard for implementing and carrying out high-voltage tests.

Complementary to a dielectric strength test station, megohmmeter or power supply, these cages enable high-voltage tests to be carried out in complete safety, in compliance with EN 50191.

Fitted with an optional electromechanical lock, they cannot be opened while high voltage is applied.

- Double safety loop SIL2
- 3 models with 29dm³, 126dm³ or 209dm³ working capacity
- Pre-equipped with test terminals or universal versions with secure cable entry



Powering Business Worldwide

CA0x SAFETY ENCLOSURE : Overview



Translucent acrylic protection cylinder with operating handle



PVC safety enclosure for testing up to 15 kVAC



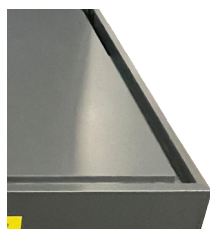
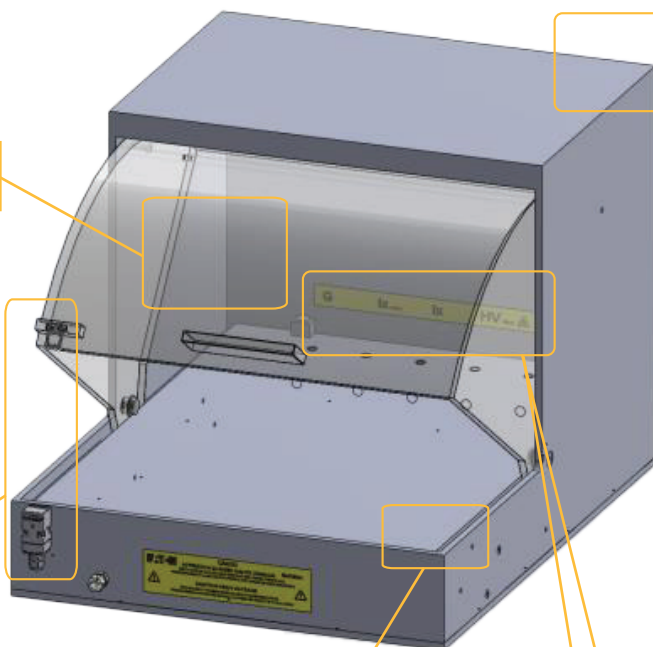
Rear cable outlet for universal enclosures



Opening safety system and electromechanical door lock



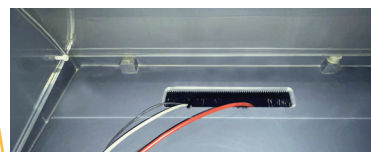
Rear cable outlet for enclosures with test terminals



Slot for door, providing the creepage distance required for tests up to 15kVAC



Connection to internal terminals of the device under test



Secure brush-type cable feed-through for all types accessories (universal enclosures)

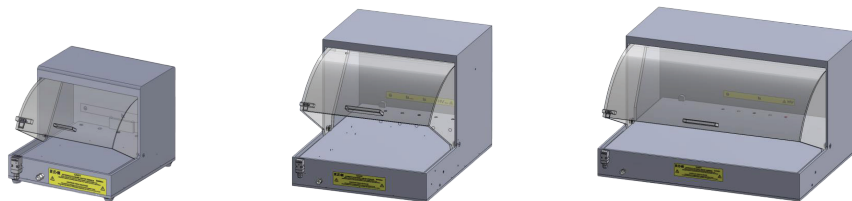


Wide opening for easy access to equipment with high visibility and clarity



Red/Green safety Lamp (Optional)

SEFELEC CA0x SAFETY ENCLOSURES - Technical Specifications

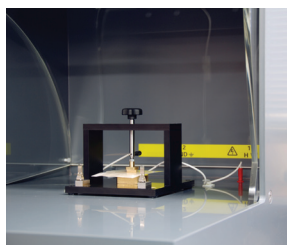


		CA01	CA02	CA03
General Specifications				
Voltage range		11kVdc / 15kVac		
External dimensions	Width	430 mm	620 mm	1000 mm
	Height	345 mm	555 mm	555 mm
	Depth	465 mm	801 mm	801 mm
Internal dimensions	Width	390 mm	578 mm	958 mm
	Cylinder door radius	212 mm	373 mm	373 mm
	Volume	29 dm ³	126 dm ³	209 cm ³
Total weight		xx kg	20 kg	xx kg
Door opening detection		With electro-mechanical contactor with fork-type actuator for 24Vac or 24Vdc circuits		
Locking (optional)		With safety block Schmersal TK-M5		

SEFELEC CA0x SAFETY ENCLOSURES - Ordering information

CA0x safety enclosures can be fitted with high voltage and safety loop leads for connection to your SEFELEC 5x, XS, RMG or PREMIER testers. CA0x-UN models feature a baffled cable entry to secure your tests.

		Without door lock			With door lock		
		Small model	Medium model	Large model	Small model	Medium model	Large model
Universal enclosures	Enclosures	CA01-UN	CA02-UN	CA03-UN	CA01-UNL	CA02-UNL	CA03-UNL
	Adaptable leads	CALE-UND			CALE-UNDL		
	Leads for 5x	CALE-UND5X			CALE-UNDL5X		
Enclosures with HV test terminals	Enclosures	CA01	CA02	CA03	CA01-L	CA02-L	CA03-L
	Leads for 5x	CALE-5X			CALE-5XL		
	Leads for SEFELEC 1000-M	CALE-5X10M			CALE-5X10ML		
	Leads for XS 50VA	CALE-XS50			CALE-XS50L		
	Leads for XS 500VA	CALE-XS500			CALE-XS500L		
	Leads for RMG	CALE-MG			CALE-MGL		
	Leads for Premier	CALE-PR2			CALE-PR3L		
Leads for Red/Green safety lamp		CALE-YLIGHT					
Red/Green safety lamp		SEFA-5XLIGHT					



Eaton - Sefelec sas
 19 rue des Campanules
 F-77185 Lognes
 Headquarters
 +33 (0)1 64 11 83 42
 Services
 +33 (0)1 64 11 83 48

Eaton - Sefelec GmbH
 Gewerbepark Oos-West
 Flugstraße 7 (Halle 5)
 D-76532 Baden-Baden
 Zentrale
 +49 (0) 22 860 246 47

Please learn more about SEFELEC enclosures on : Sefelec.com

Eaton and Sefelec are registered trademarks. All other trademarks are property of their respective owners.

Follow us on social media to get the latest product and support information.



© 2024 Eaton
 All Rights Reserved